



Omni-ID® Adept 400

Designed for use in very harsh environments, the Omni-ID Adept 400 is ideal for attachment to pipes and fixed assets in remote production, extraction, and processing industrial facilities. Capable of surviving heavy impact from a sledge hammer, the Adept 400 can be attached with either a steel band or a permanent adhesive for long term field use.

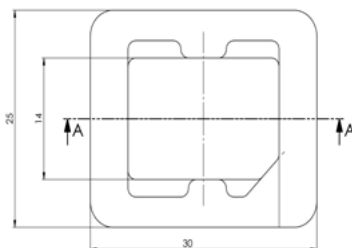
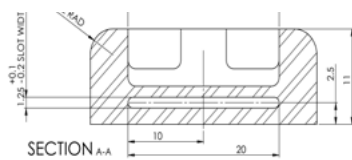
Applications

Designed for easy strap or adhesive attachment, the Omni-ID Adept 400 is perfect for industrial applications requiring high impact resistance, including MRO applications for identifying :

- ▶ Piping
- ▶ Valves
- ▶ Processing equipment

Physical Specifications

Encasement	Stainless Steel
Size (mm) (tolerance)	30 x 25 x 11 (+/-1.0)
Size (in) (tolerance)	1.18 x 0.98 x 0.43 (+/-0.04)
Weight (g)	45.0



Dimensions stated in mm

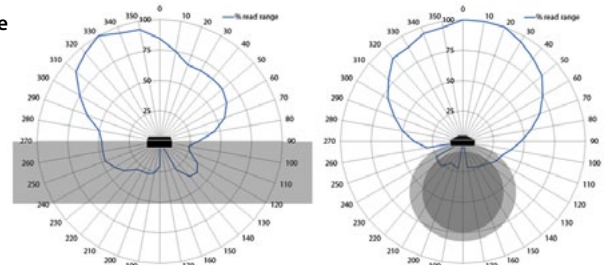
RF Specifications

Protocol	EPC Class 1 Gen2
Frequency Range (MHz)	866-868 (EU) 902-928 (US)
Read Range (Fixed reader) ¹	Up to 2.5m (8.2ft) EU Up to 3.5m (11.5ft) US
Read Range (Handheld reader) ¹	Up to 1.0m (3.3ft) EU Up to 1.5m (4.9ft) US
Material Compatibility	Optimized for Metal substrates
IC Type (chip)	Higgs 3
Memory ²	EPC - 96bits User - 512bits TID - 64bits

1. Quoted performance achieved using standard testing methodology. Read range will vary with reader hardware and output power.
2. EPC and User memory are reprogrammable, TID is locked at point of manufacture.

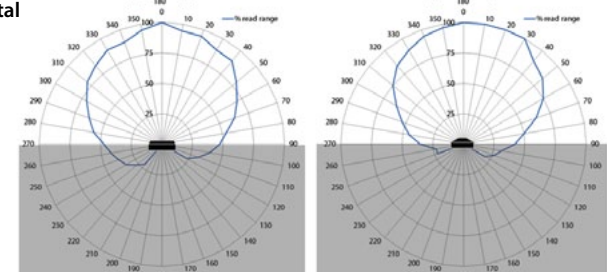
Radiation Patterns

On Pipe



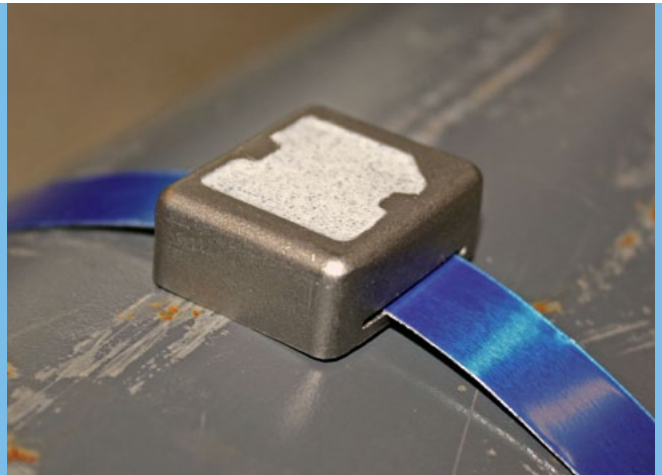
On Metal Sheet

Sheet



Related Products and Services

- ▶ **Omni-ID Pipe** - High impact RFID tag for strap attachment to cylindrical assets.
- ▶ **Omni-ID 360 °** - Extremely durable, high performance tether tag with 360 ° read angle for heavy industry applications.
- ▶ **Omni-ID Grip** - High durability RFID tag for strap attachment to narrow diameter tubular assets such as hoses and poles.
- ▶ **Service Bureau** - Omni-ID offers a full service bureau for printing and pre-encoding Omni-ID tags at point of manufacture.



Environmental Specification

Operating Temperature	-40 to +85°C
Long term Max Temperature ¹ exposure - (days,weeks,years)	+120°C
Short term Max Temperature ¹ exposure - (minutes,hours)	+150°C
IP Rating	IP68
Shock and Vibration	MIL STD 810-F
Impact ²	Resistant to face strike with sledgehammer
Attachment	Steel strapping or permanent adhesive (not supplied with product)
Certifications	RoHS approved CE approved ATEX/IECEX certified (option) US&Canada (C1D1/D2) certified (option)
Warranty	1 year

1. Excludes adhesive options, consult adhesive data sheets for recommended temperature ratings.
2. Testing methodology available on request

Ordering Information

Order Numbers	049- US, EU :304 (ATEX/IECEX certified) :307 (US&Canada (C1D1/D2) certified) :701 (Standard Service Bureau) :702 (Custom Service Bureau) :704 (Single side laser mark)
---------------	---



TG Technology
Byleddet 3A
4000 Roskilde
Denmark

TG Technology
www.tg-tag.com
info@tg-tag.com
+45 221 221 88